

SIEGE OF THE PHILIPPINES



Historical Data:

The Japanese needed to take the Philippines from the United States for three principal reasons:

1. To prevent the United States from using the Philippines as a base for launching long ranged bombers, and to supply other operations in the theater,
2. To enhance other Japanese operations in the area as a staging area and a supply base,
3. And to enhance lines of communications in the theater.

General Douglas MacArthur was the supreme allied commander of the Pacific Theater, and had his base on the island of Corregidor in the Philippines. After the Japanese attacked the island of Bataan on December 1941, MacArthur put into effect the plans he had drawn up for the defense of the Philippines. The Japanese began the systematic attack and capture of the islands. By March 1942, Roosevelt had ordered MacArthur and his staff and families to leave. They were evacuated by Patrol Boat Squadron Three on March 11. General Wainwright had been left in charge. Corregidor itself was attacked on May 5th, and the surrender took place on May 6th. After arriving on Australia, MacArthur gave his historical "I shall return" speech. The picture above shows the Japanese replacing the American flag, with their own flag.

SIEGE OF THE PHILIPPINES

Allied Commander: General Johnathan Wainwright

Reserve tokens: Two

Reserve Rolls:

Star + Star

You may, at the cost of one reserve token, upgrade a unit as follows:

Infantry - US Engineers

Armor - Flame Tanks

Artillery - Big Guns

Flag + Star

You may place two barbed wire, two sandbags, or two hedgehog obstacles at no reserve cost.

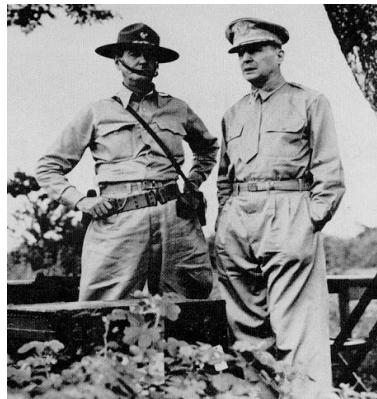
Flag + Unit (armor or infantry)

Place unit and defensive sandbags at one reserve token cost.

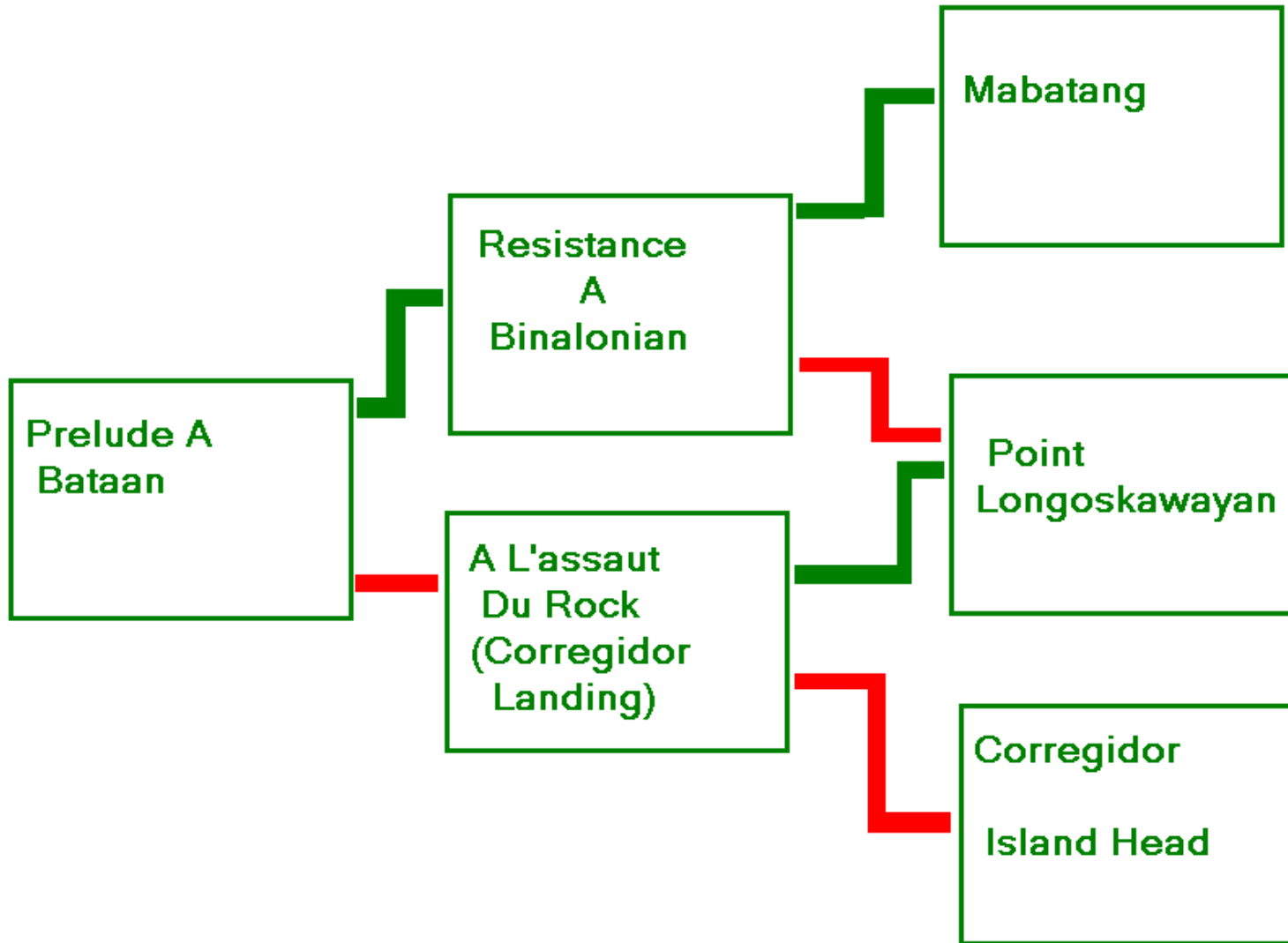
Star + Unit (armor or infantry)

Armor - Elite Armor (four figures)

Infantry - Special Forces (Marine Badge)



SIEGE OF THE PHILIPPINES



SIEGE OF THE PHILIPPINES

Japanese Commander: Masaharu Homma

Reserve Tokens: Three and one air power token

Reserve Rolls:

Star + Star

Take a medal token and use it at any time as a bombard card without playing any cards that turn.

Flag + Star

You may move two infantry units forward one space at no reserve cost.

Flag + Unit (armor or infantry)

Place unit and sandbags at one reserve token costs.

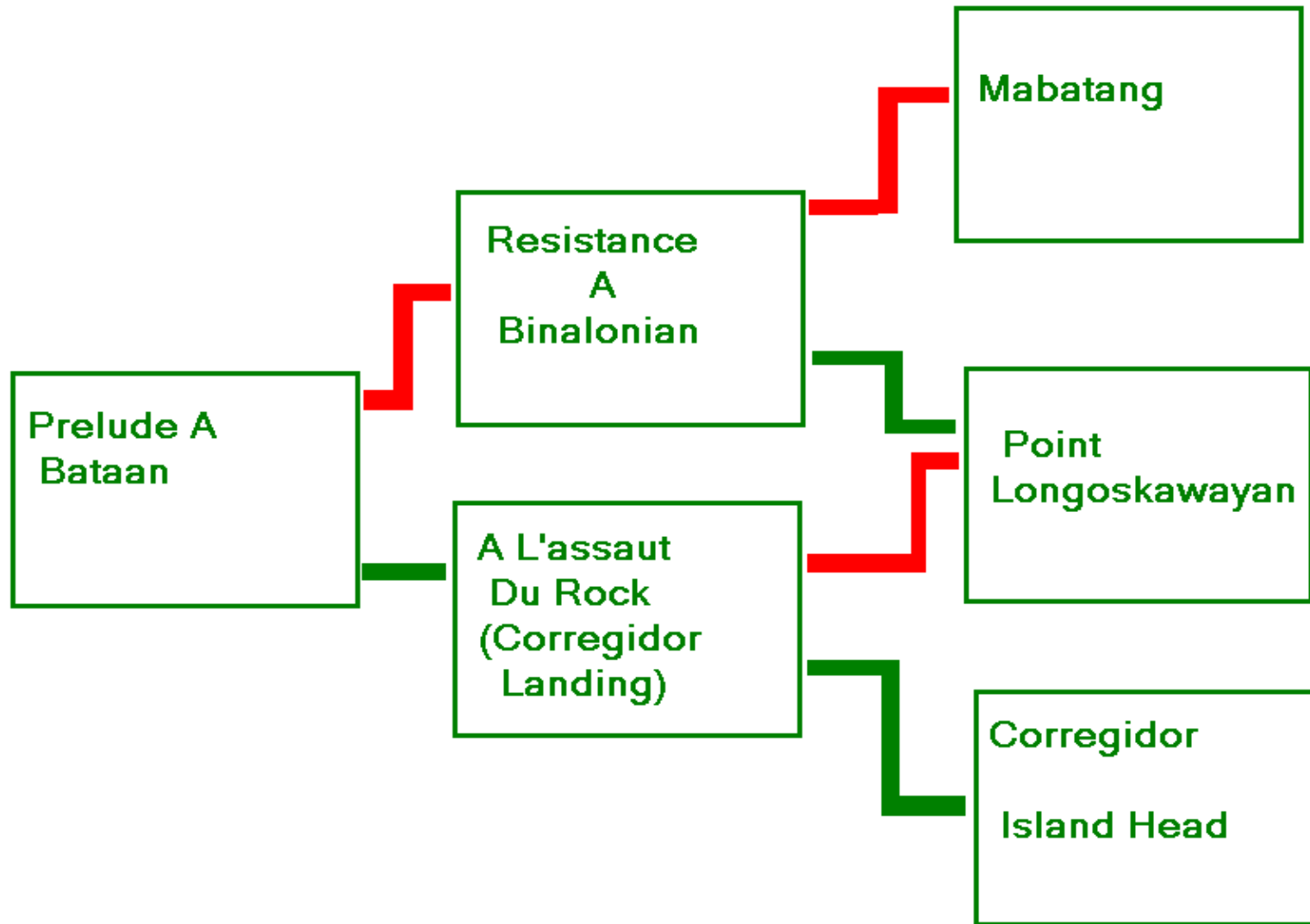
Star + Unit (armor or infantry)

Armor - Elite Armor (four figures)

Infantry - Special Forces (Giretsu Badge)



SIEGE OF THE PHILIPPINES



SIEGE OF THE PHILIPPINES

The Scenarios of the Philippines:

1. Prelude A Bataan (Prelude: Bataan) By Jdrommel

This is the landing in the Gulf of Lingayen. It is part of the Japanese invasion of Luzon and the prelude of the Bataan Campaign.

2. Resistance A Binalonian (Resistance on Binalonian) By Jdrommel

This is the battle of Binalonian between Philippine cavalry and Japanese 48th division, in Luzon Island.

3. A L'assaut Du Rock (The assault of the "rock") By Jdrommel

This is the Japanese invasion of the island of Corregidor after the American defeat of Bataan. The fall of Corregidor will end the Japanese campaign of Luzon.

4. Mabatang by RBorg

The "fighting retreat" south of the Calaguiman River.

5. Pointe Longoskawayn By Jdrommel

This is the battle of Longoskawayan Point in the Bataan peninsula where the Japanese landed at the rear of Gen Wainwright's US and Filipino troops.

6. Island Head By 50th

This is another battle on Corregidor at the largest point of the island. This is the last battle before the U.S. and Filipino troops ask for terms of surrender.